

# Multi-Wiper™



**Enhancing Productivity in Nuclear Medicine**

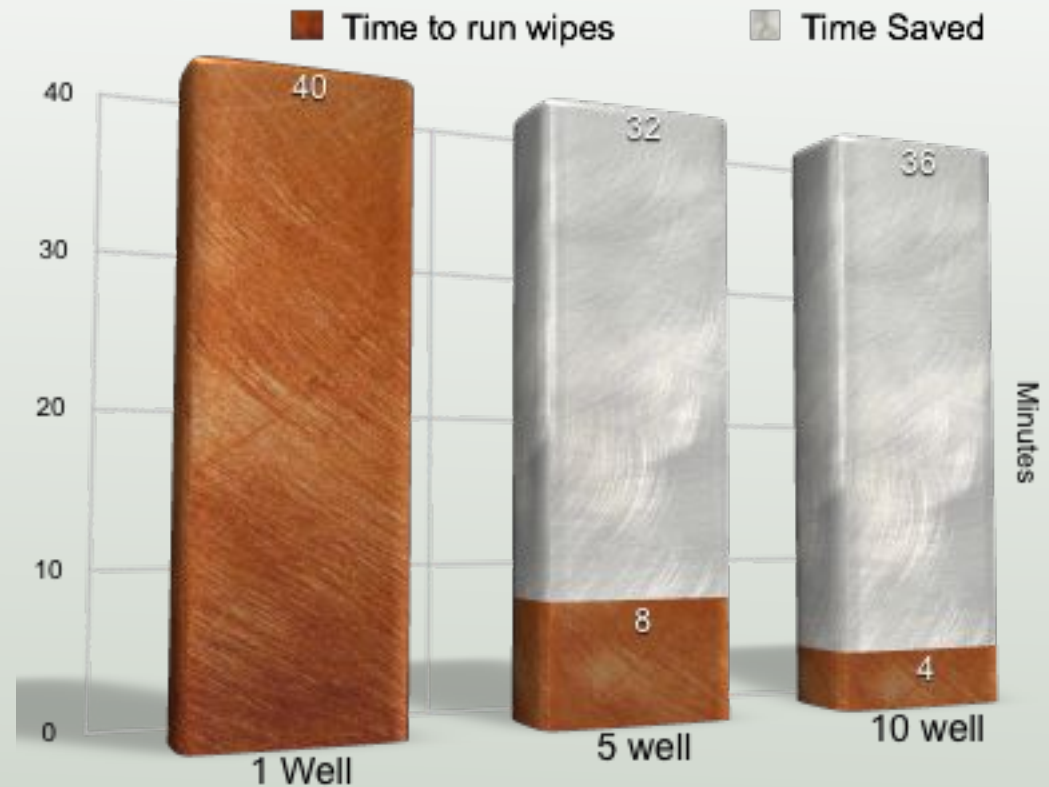
# Your Time is Valuable, Spend it Wisely

The old axiom “Time is Money” has never been truer than in today’s healthcare environment.

Poor efficiency and redundant tasks waste valuable technologist time. Time which could be better spent running procedures which generate income for the department.



Time spent running wipes. Single well vs Multi-Wiper™



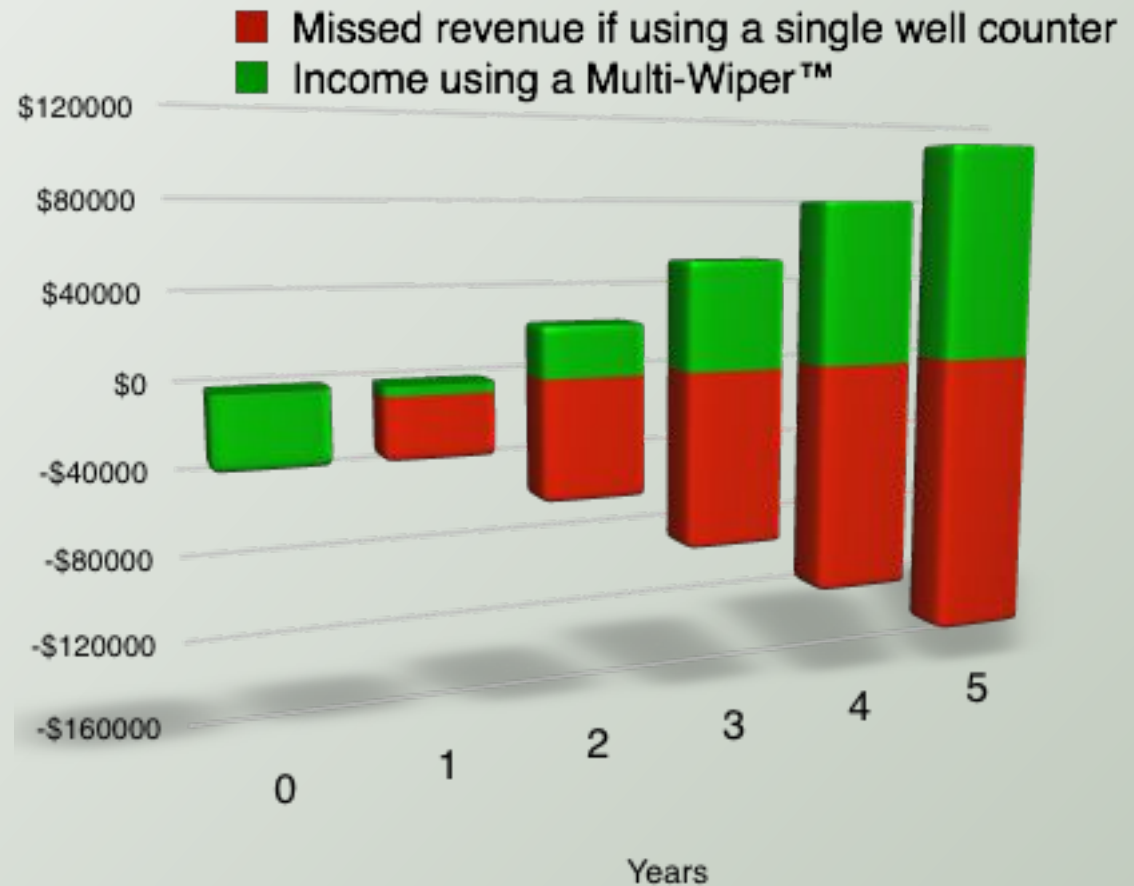
A moderate sized Nuclear Medicine department can generate 40 wipe tests per week. Using a single well wipe counter will take the technologist 40+ minutes to count these wipes.

By using a 10 well Multi-Wiper™, that time is reduced to just 4 minutes. That means a gain of 36 minutes of extra time *per week*.

# Increased Department Revenue

With all the extra time gained using the Multi-Wiper™, your department can add more profit-generating procedures.

Using the Multi-Wiper™, an average size department could increase profit by \$120,000 in just five years.\*



*Productivity equals Profitability*

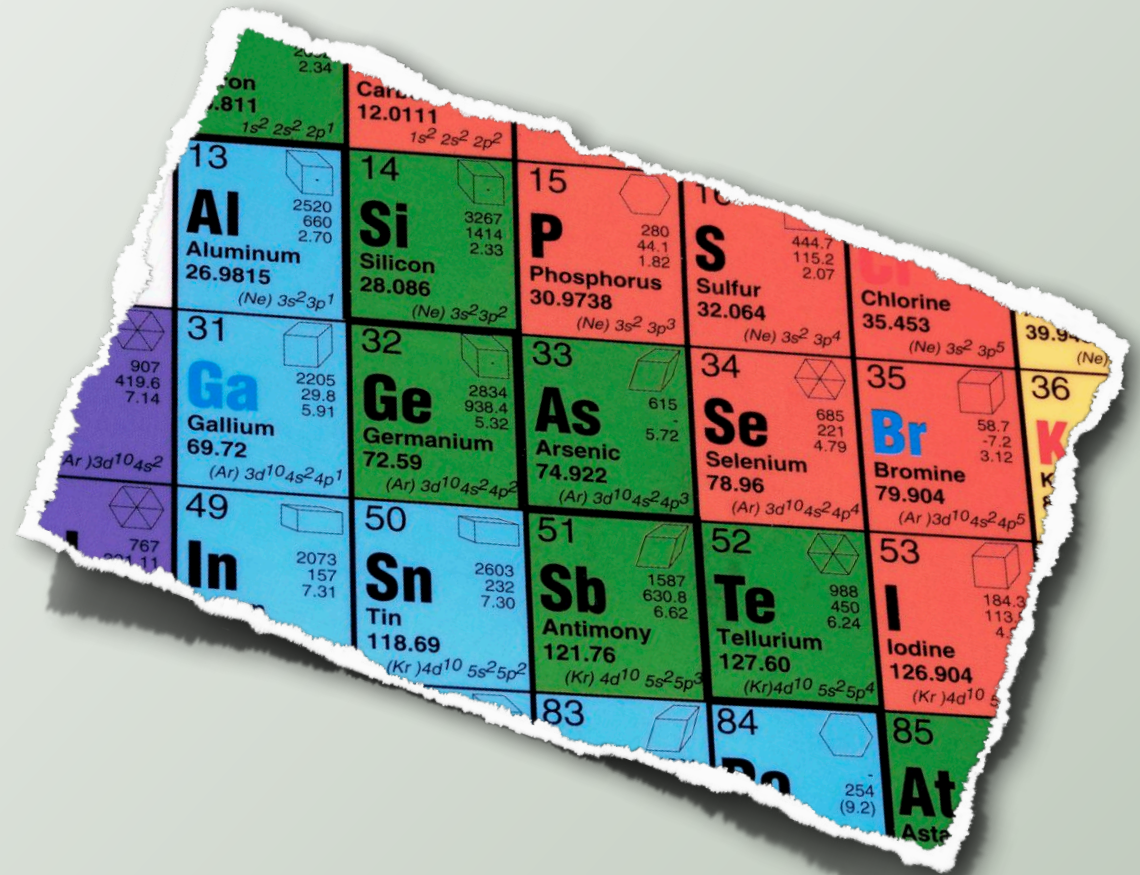
\* Profit calculated using extra time to perform thyroid uptakes at a cost of \$425 per procedure. More profitable procedures would provide even higher revenue gains.

# Say Goodbye to all those Calibration Sources

With AutoSpect,™ you no longer need to purchase expensive isotope standards for multiple energies.

With just a single Cs137 source, Multi-Wiper™ gives accurate DPM on any isotope you choose\*.

Our revolutionary approach allows the user to enter ANY gamma emitting isotope\* and calculate real DPM results automatically.



*“ With Multi-Wiper™ I no longer have to buy 4 different sources, that saves my department a lot of money . ”*

\*The Multi-Wiper can measure any isotope that has gamma or x-ray emissions up to 1 MEV.

# CPM Test Library

Quickly and easily count samples to be reported as CPM.

You may choose the count time, the source of data for the test, (wells, keypad, etc) the isotope measured and the display/print modes.

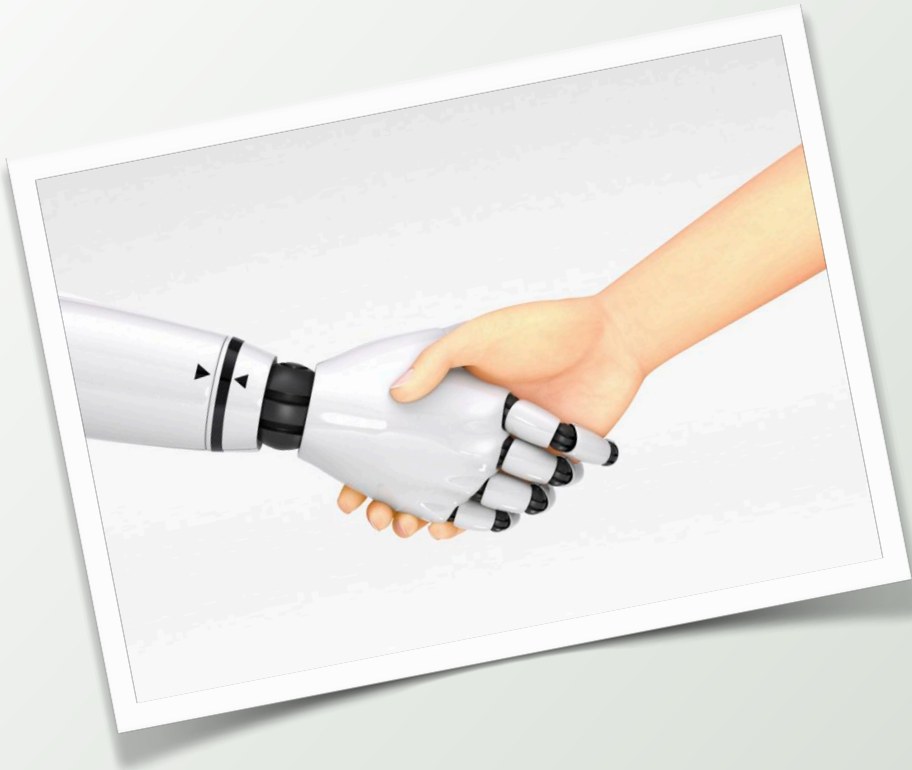
Count samples with a selected isotope for specified length of time. Background is automatically subtracted.

**CPM TEST**

1 COUNT TIME(SEC): 60  
2 DATA SOURCE: COUNT TUBE  
3 ISOTOPE FULL  
4 PRINT-DISPLAY: ON: ON  
5 RUN

SELECT FUNCTION: ■

# Automation is the Key



Automation makes a difference. When a time consuming task can be automated, productivity is enhanced. The Multi-Wiper™ reduces what was 80 steps by the technologist to a mere 8 steps.

The Multi-Wiper™ automates the manual task of converting CPM to DPM, and eliminates having to write wipe test results by hand.





# Conclusion

Wipe testing, while necessary for regulatory compliance and safety, is a drain on department productivity.



The Multi-Wiper™ solves this by:

- Eliminating wasted technologist time
- Creating extra work time to add patient procedures
- Minimizing the risk of regulatory fines
- Eliminating the need to buy multiple calibration sources

# Technical Specifications

The Multi-Wiper™ is designed to enhance productivity in nuclear medicine by drastically freeing up technologist time, automating the process of wipe testing, isotope identification and record keeping.

## **Detectors:**

Each well is an independent NaI(tl)/PMT assembly, featuring a drilled well with a removable liner to protect against contamination. The unique design of the crystal provides additional mass below the well for enhanced stopping power with higher energy isotopes. All photomultiplier tubes are carefully selected for linearity, gain stability, low hysteresis and target high voltage.

## **Well Dimensions:**

1.25 inches (3.175cm) deep x .669 inches (1.7cm) diameter.

## **Shielding:**

0.85 inches (2.16cm) of virgin lead surrounds the detector array. Proprietary E-Lead™ technology eliminates well-to-well crosstalk even when counting higher energy isotopes such as F18 (511 KEV).

## **High Voltage:**

Automatic adjustment via calibration routine. Utilizing high resolution DAC circuitry, excellent stability and energy linearity is achieved. Combining this with a 12 bit ADC allows the Multi-Wiper™ to achieve spectral accuracy unparalleled in any other well counter.

## **Analyzer:**

High speed 4096 channel MCA matrix circuitry, automatic dead time correction, baseline correction with pole zero restoration. MCA features integral linearity of better than 0.5%. Count rate capability is up to 300,000 CPS.

## **Electronics:**

Embedded CPU hosting all software. For system reliability, CPU, memory, I/O, analyzer and high voltage are all contained on a single PCB incorporating advanced surface mount CPLD technology.

## **Printer:**

Included, no user setup required beyond plugging in. Choice of laser or industrial grade impact style.

## **Power:**

100-240 VAC (universal, automatically adjusting power supply), 50-60 Hz, less than 30 watt consumption.

## **Dimensions:**

20 inches (51cm) width x 13.5 inches (34cm) depth x 10.5 inches (27cm) height. Printer dimensions vary by model selected.

## **Weight:**

Less than 100 pounds (45kg), model dependent.

## **Installation requirements:**

Clean power source, solid load bearing bench or cart. Keep away from sinks or water spray, mechanical hazards and areas prone to rapid temperature changes (direct sunlight, heating/cooling ducts).

*Designed, built and tested in the United States of America.*

# Model Information

<b>SKU</b>	<b>Description</b>
LTIW1002US	Multi-Wiper™ 2 Well Counter <i>Two NaI(tl) detectors counting simultaneously. Full page printer, self contained complete with wipe testing, isotope identification and many more features.</i>
LTIW1003US	Multi-Wiper™ 3 Well Counter <i>Three NaI(tl) detectors counting simultaneously. Full page printer, self contained complete with wipe testing, isotope identification and many more features.</i>
LTIW1004US	Multi-Wiper™ 4 Well Counter <i>Four NaI(tl) detectors counting simultaneously. Full page printer, self contained complete with wipe testing, isotope identification and many more features.</i>
LTIW1005US	Multi-Wiper™ 5 Well Counter <i>Five NaI(tl) detectors counting simultaneously. Full page printer, self contained complete with wipe testing, isotope identification and many more features.</i>
LTIW1006US	Multi-Wiper™ 6 Well Counter <i>Six NaI(tl) detectors counting simultaneously. Full page printer, self contained complete with wipe testing, isotope identification and many more features.</i>
LTIW1008US	Multi-Wiper™ 8 Well Counter <i>Eight NaI(tl) detectors counting simultaneously. Full page printer, self contained complete with wipe testing, isotope identification and many more features.</i>
LTIW1010US	Multi-Wiper™ 10 Well Counter <i>Ten NaI(tl) detectors counting simultaneously. Full page printer, self contained complete with wipe testing, isotope identification and many more features.</i>

# About LTI

Laboratory Technologies Inc. was established in 1983 as a manufacturer of multi-well gamma counters. We are an American company. All of our products are designed and manufactured in the USA. Over the years, we have worked closely with many leading diagnostic companies and have become widely regarded as a leading worldwide supplier.

Our experience in designing nuclear instrumentation comes from the many diverse backgrounds of our engineering staff. They have worked collectively in the fields of: clinical, research and industrial analysis of gamma, beta and alpha radioactivity, as well as luminescence and others. They have been responsible for designing a multitude of gamma and beta counters, nuclear medicine cameras, dose calibrators, multichannel analyzers, luminescence readers and many others. This diverse background gives us the ability to design a wide range of instrumentation for a variety of disciplines.

At Laboratory Technologies Inc, our focus is on the design and manufacture of what we know best, nuclear instrumentation. No other manufacturer has our knowledge, experience and expertise. Ensure you are buying only the best, ensure you are buying instrumentation and supplies designed and manufactured by Laboratory Technologies, Inc.



Elburn , IL 60119  
800.542.1123 630.365.1000 630.365.9687 fax  
[www.labtechinc.com](http://www.labtechinc.com) [sales@labtechinc.com](mailto:sales@labtechinc.com)